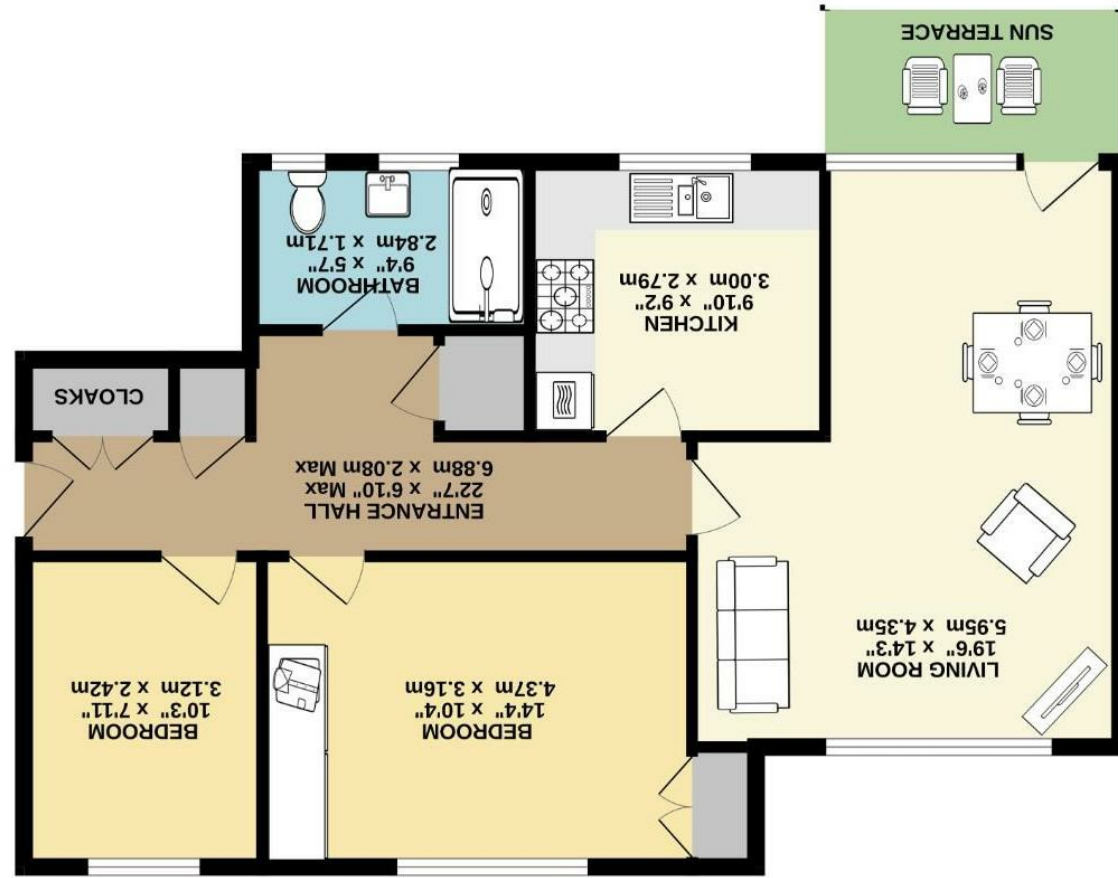


Fishwick nor the vendor or lessor accept any responsibility in respect of these particulars, which are not intended to be statements or representations of fact and any intending purchaser or lessee must satisfy himself by inspection or otherwise as to the correctness of each of the statements contained in these particulars. Any floorplans on this brochure are for illustrative purposes only and are not necessarily to scale.



GROUND FLOOR (70.7 sq.m.) approx.





Fog Lane, Didsbury M20 6SH

£260,000



### The Property

A superbly presented TWO DOUBLE BEDROOM apartment with GENEROUS PROPORTIONS, forming part of a POPULAR DEVELOPMENT opposite FOG LANE PARK and with the benefit of a GARAGE and outdoor terrace. The accommodation extends over 760 sq ft and enjoys both gas central heating and uPVC double glazing, in outline comprising: - Communal entrance, private entrance hall extending over 22ft with built-in cloaks and storage cupboards, L-shaped living room with access to a flagged seating area to the rear, fitted kitchen with a range of base and eye level units, two double bedrooms with fitted wardrobes to the main, and a modern shower room with white suite, chrome fittings and tiled walls & floor. Externally, there are well tended communal grounds, some residents parking and as previously mentioned, a garage.

### Directions

M20 6SH



- Superbly presented ground floor apartment
- Two excellent double bedrooms
- L-shaped lounge/dining room
- Modern kitchen & shower room
- Entrance hall over 22ft
- uPVC double glazing
- Gas central heating
- Garage
- Outdoor sun terrace
- Opposite Fog Lane Park

Postcode - M20 6SH

EPC Rating - C

Floor Area - 761.00 sq ft

Local Authority - Manchester City Council

Council Tax - C

